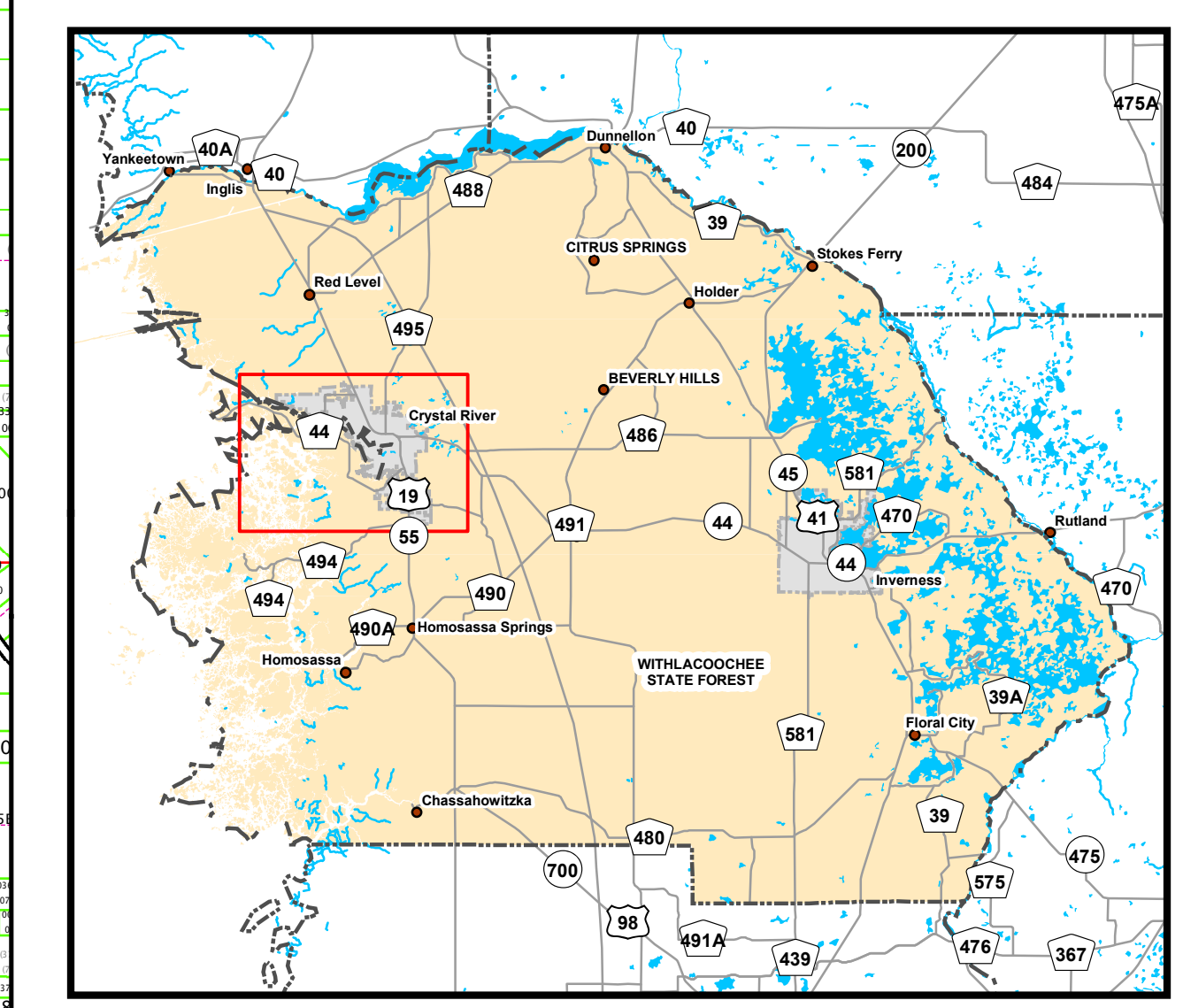
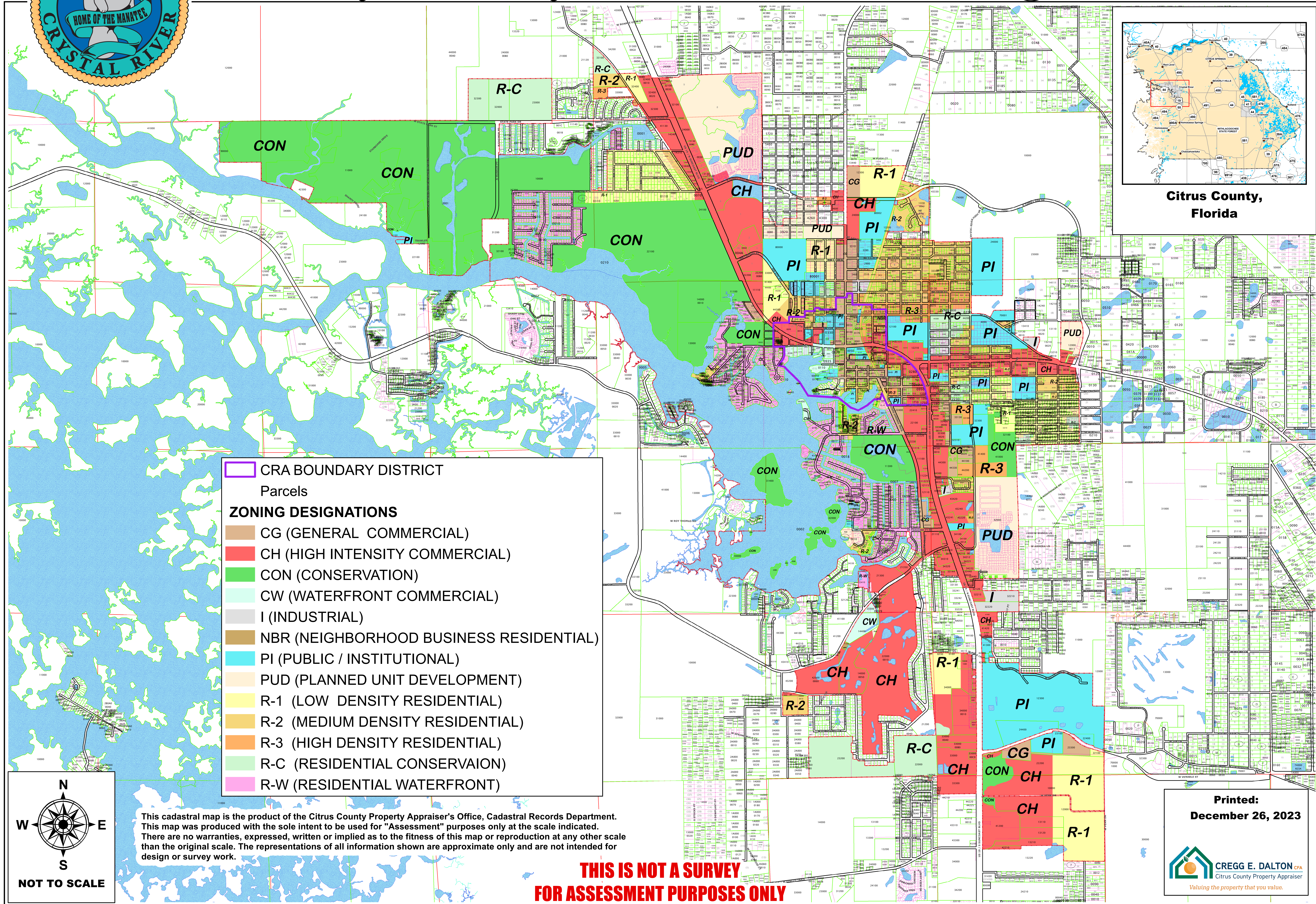




City of Crystal River Zoning

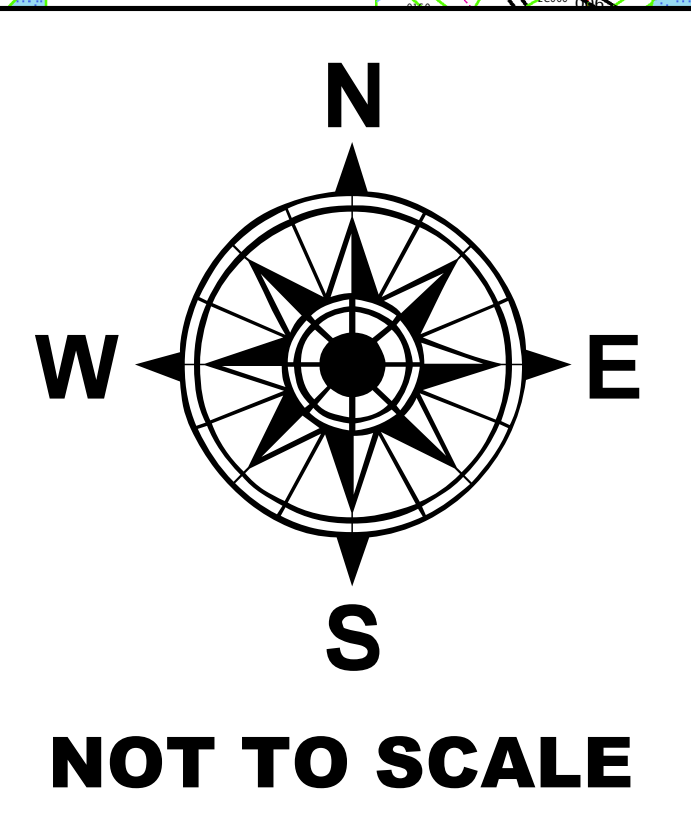


Citrus County, Florida



CRA BOUNDARY DISTRICT
 Parcels
ZONING DESIGNATIONS
 CG (GENERAL COMMERCIAL)
 CH (HIGH INTENSITY COMMERCIAL)
 CON (CONSERVATION)
 CW (WATERFRONT COMMERCIAL)
 I (INDUSTRIAL)
 NBR (NEIGHBORHOOD BUSINESS RESIDENTIAL)
 PI (PUBLIC / INSTITUTIONAL)
 PUD (PLANNED UNIT DEVELOPMENT)
 R-1 (LOW DENSITY RESIDENTIAL)
 R-2 (MEDIUM DENSITY RESIDENTIAL)
 R-3 (HIGH DENSITY RESIDENTIAL)
 R-C (RESIDENTIAL CONSERVAION)
 R-W (RESIDENTIAL WATERFRONT)

This cadastral map is the product of the Citrus County Property Appraiser's Office, Cadastral Records Department. This map was produced with the sole intent to be used for "Assessment" purposes only at the scale indicated. There are no warranties, expressed, written or implied as to the fitness of this map or reproduction at any other scale than the original scale. The representations of all information shown are approximate only and are not intended for design or survey work.



**THIS IS NOT A SURVEY
FOR ASSESSMENT PURPOSES ONLY**

Printed:
December 26, 2023

 CREGG E. DALTON CFA
 Citrus County Property Appraiser
 Valuing the property that you value.