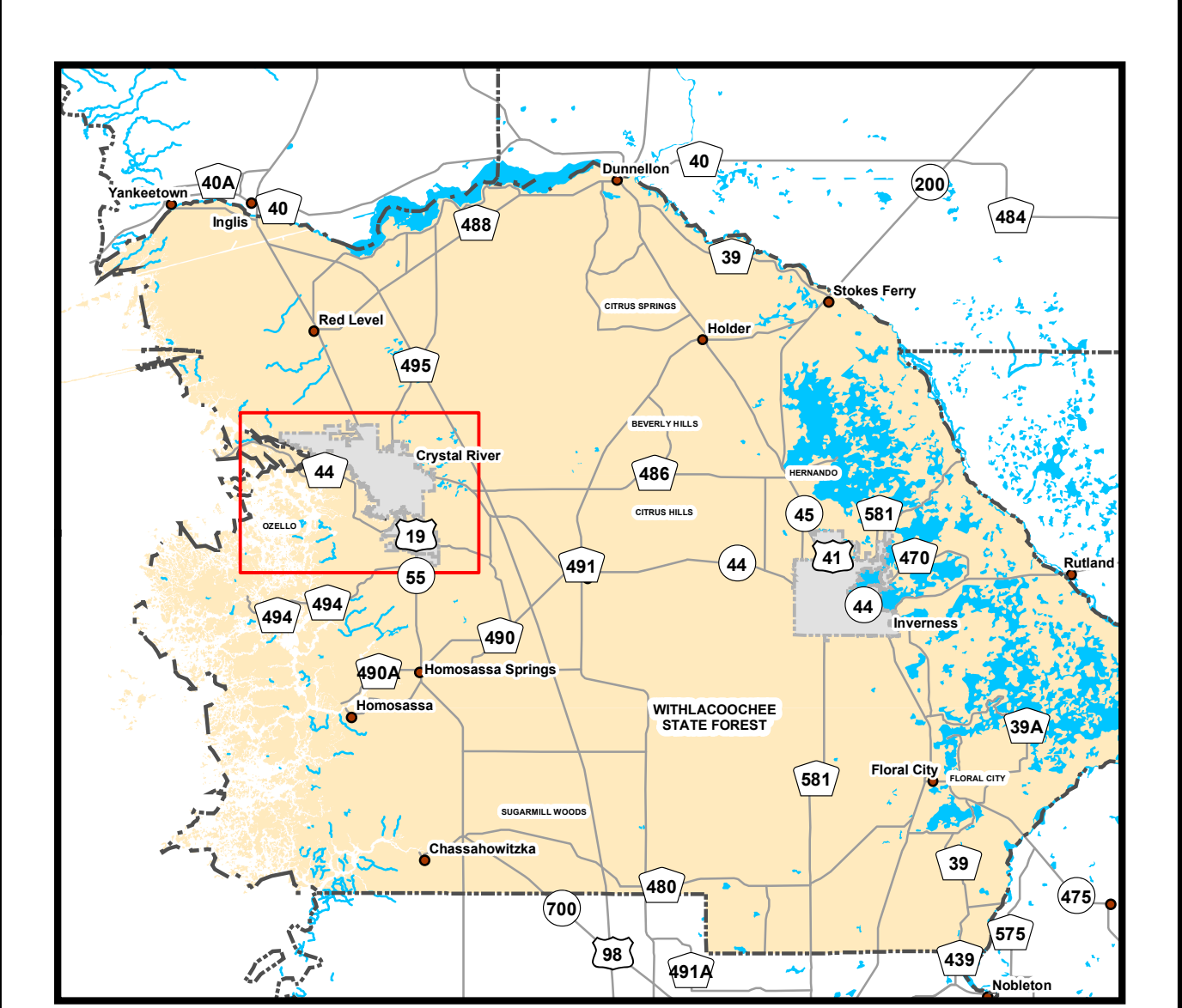


# City of Crystal River Future Land Use Map "2021-2030"

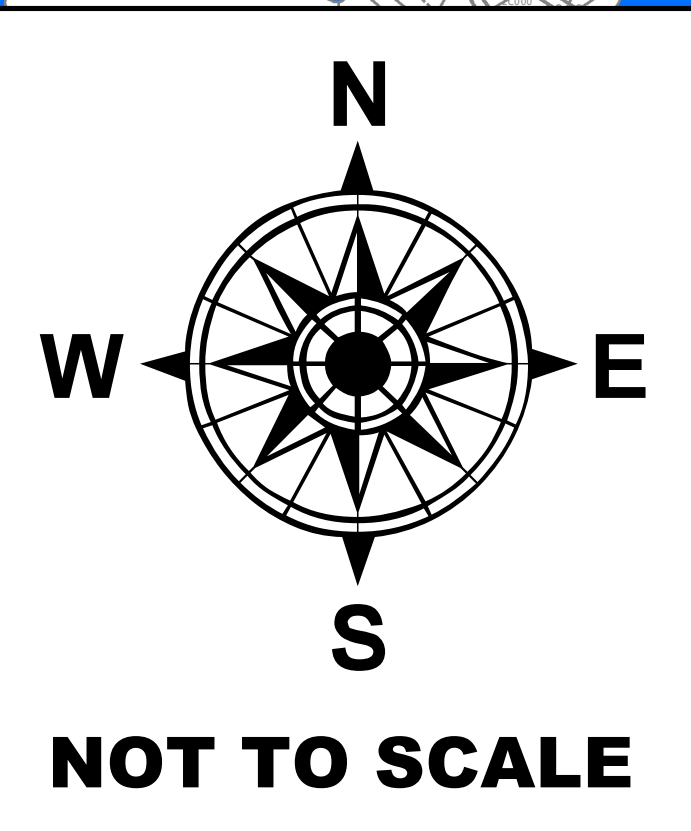


**Citrus County,  
Florida**

**LAND USE CLASSIFICATIONS  
FUTURE LAND USE MAP  
2021-2030**

**LAND USE**

- CBD - Central Business District
- CLDR - Coastal Low Density Residential 0.5 du/ac (May be increased up to 2.5 du/ac if performance standards are met)
- CON - Conservation 0.5 du/ac
- CRA - Community Redevelopment Area
- CW - Waterfront Commercial
- HC - Highway Commercial
- HDR - High Density Residential 12 du/ac
- IND - Industrial
- LDR - Low Density Residential 3.0 du/ac
- MDR - Medium Density Residential 8.0 du/ac
- MXD - Mixed Use
- O/SC - Office / Service Commercial
- P/SP - Public/Semi-Public



This cadastral map is the product of the Citrus County Property Appraiser's Office, Cadastral Records Department. This map was produced with the sole intent to be used for "Assessment" purposes only at the scale indicated. There are no warranties, expressed or implied as to the fitness of this map or reproduction at any other scale than the original scale. The representations of all information shown are approximate only and are not intended for design or survey work.

**THIS IS NOT A SURVEY  
FOR ASSESSMENT PURPOSES ONLY**

**Printed:  
June 23, 2023**

**CREGG E. DALTON** CFA  
Citrus County Property Appraiser  
*Valuing the property that you value.*