

RECREATION ELEMENT



ORD. 11-O-06 SEPTEMBER 12, 2011
ORD. 22-O-23 DECEMBER 12, 2022

**Recreation Element
Data and Analysis**

Table of Contents

| | Page |
|---|-------------|
| Introduction | 1 |
| Background | 1 |
| Inventory of Existing Recreation and Parks Facilities | 1 |
| City Parks and Facilities | 1 |
| County Parks and Facilities | 2 |
| State and Federal Properties | 2 |
| Private Recreational Sites | 2 |
| Waterfront Access | 2 |
| Regional Facilities | 3 |
| Open Space | 3 |
| Analysis of Existing Recreation and Parks | 3 |
| Projected Recreation Parks and Facilities Needs | 4 |
| Land Area | 4 |
| Facilities | 5 |
| Tables | |
| Existing Recreation and Open Space Levels of Service 2020 | 3-4 |
| Existing Recreation Facilities Levels of Service 2020 | 4 |
| Projected Acreage Needs by Type of Recreation Space 2020 – 2035 | 5 |
| Projected Recreation Facilities Needs 2020 – 2035 | 5-6 |
| 2022 Inventory of Parks and Recreation Sites | 7-10 |
| Maps | |
| Recreation Facilities and Open Space Map | 11 |
| Appendix | |
| Crystal River Preserve State Park | 13 |
| 2022 Inventory of Amenities per Recreational Facilities | 14 |
| | |
| | |
| | |
| | |
| | |
| | |
| | |

Recreation Element Data and Analysis

Introduction

The City of Crystal River is blessed with an abundance of open space and recreational resources. The principal natural resource is Kings Bay and the Crystal River. There are a number of public and private parks and recreation facilities that serve to meet the needs of the city's residents as well as residents of surrounding areas. This element includes an inventory of existing public facilities and open space, level of service standards, and projections of future demand. Private facilities are discussed briefly, but are not included in the level of service calculations. Changes reflect recommendations from the 2018 EAR and changes to the parks and recreation facilities since 2011.

Background

The purpose of the Recreation Element as set forth in Section 163.3177(6)(e), *Florida Statutes (F.S.)*, is to plan for a comprehensive system of public and private recreation sites and facilities. Public and private recreation sites and facilities may include natural reserves, parks and playgrounds, parkways, beaches and public access to them, open spaces, waterways, and other recreation facilities. Section 163.3177, F.S., lists the Recreation & Open Space Element as a required element within comprehensive plans. The data and analysis represent best available information on the topics which follow.

Inventory of Existing Recreation Parks and Facilities

An inventory of publicly owned parks and facilities located within the City of Crystal River is included in a table in this data and analysis.

City Parks and Facilities

The City owns and maintains ten properties used for parks and open space. These parks contain approximately 149 acres and include a range of passive and active recreation. The Cross Town Trail and Kings Bay River Walk function as linear parks. Since the last update to the Plan, the Crystal River Town Square has been acquired and improved, and the Kings Bay River Walk has been partially constructed and its completion remains in progress. The City owns two boat ramps; in both cases, parking is on adjacent private property. Along the Cross Town Trail is the Railroad Station on Crystal Street. This facility is leased for the long-term to the Crystal River Lions Club and is used for various events and activities. Property at Three Sisters Spring was acquired in July 2010 and is managed in association with the US Fish and Wildlife Service and the Southwest Florida Water Management District; the land area has been improved with a nature trail and observation decking placed along the waterway to view the West Indian Manatee.

In 2018, the City constructed phase one of the Kings Bay Riverwalk which serves as a linear recreational facility that will be approximately one mile long when completed. The project is seventy-five percent completed. The facility extends through the downtown City area proximate to the new Crystal River Townsquare park established in 2020. At completion, the Riverwalk will provide a scenic promenade along the Kings Bay of the Crystal River.

County Parks and Facilities

The County owns and maintains the Bicentennial Park within the City limits. This regional activity-based park is adjacent to the Crystal River Airport. It was annexed into the City in 2010 and contains approximately 148 acres of land.

State and Federal Properties

The State of Florida owns more than 1,100 acres of land within the City limits. These properties include the Crystal River Archaeological State Park and portions of the Crystal River Preserve State Park, which property includes the Church house Hammock Park. The Preserve State Park contains approximately 30,000 acres in total area and stretches from Power Line Rd. north of Crystal River to the Chassahowitzka National Wildlife Refuge on the southern boundary of Citrus County. The Archaeological State Park and the Preserve are managed by the State Park Service under the Florida Department of Environmental Protection. Portions of the Preserve were purchased through funding from the Conservation and Recreation Land Program (C.A.R.L.). The majority of this property is considered as open space and is not counted as activity-based recreation.

The U.S. Fish and Wildlife Service has its headquarters and visitor center for the Crystal River National Wildlife Refuge on SE Kings' Bay Drive. The Wildlife Refuge was established in 1983 to protect the endangered West Indian Manatee, for whom the warm spring waters of the 1st magnitude springs are a critical habitat area. This Plan also contains a Manatee Protection Element with additional information about the manatee and its critical habitat.

Private Recreational Sites

Pete's Pier and Marina is located at the end of SW 1st Place in Crystal River. This privately-operated marina maintains berths for permanent and seasonal boat rentals as well as other commercial and recreational boating facilities. The boat ramps on the site are owned and maintained by the City of Crystal River. There are other privately owned facilities that provide access to Kings Bay and the Crystal River, including boat ramps at Best Western, The Port, and Woodland Estates Homeowners Association. The Plantation Inn and Golf Resort provides golfing, conference facilities and water access. Numerous dive shops offer both tourists and local residents access to water-based sports and recreation.

Waterfront Access

Much of the waterfront is accessible to individual, private land owners either along the Bay, the River or man-made canals. Approximately one-quarter of the land within the City is owned by the State, or by a combination of state, city, and regional governments. The City participates with the Florida Department of Economic Opportunity (formerly known as the Florida Department of Community Affairs) in the Waterfronts Florida Designated Area located along Kings Bay. This designation was achieved in 2004. Together with the Community Redevelopment Agency, the City purchased Kings Bay Park on the edge of the Waterfronts Florida designated area. The intent was to provide more public access to the Bay. The park includes a public pier, a leased dive shop, parking, and availability for canoe and kayak docking and launching. Kings Bay and the Crystal River are also designated as Outstanding Florida Waterways. The Kings Bay Springs Group contains a number of springs, five of which are described in Bulletin 66 prepared by the Florida Geological Survey.

Regional Facilities

There are a number of other regional facilities within Citrus County that are available to the residents of Crystal River. These facilities include:

- Fort Island Gulf Beach, boat ramp, and fishing pier
- The Withlacoochee State Forest (Citrus Tract)
- Homosassa Springs State Wildlife Park
- Florida Barge Canal and Boat Ramp (Cross Florida Greenway)
- Fort Cooper State Park
- Chassahowitzka National Wildlife Refuge
- Crystal River Preserve State Park

Open Space

Open space is unimproved land which is suitable for passive recreation and conservation uses. This land may be publicly owned and held apart from intense development in order to preserve native forests, to preserve wetlands and minimize flooding, to protect habitats, and other public health, safety, and welfare purposes. Because much of Crystal River is located within the 100-year floodplain, these conservation and open space areas serve multiple purposes. On private property, open space may be used to preserve pervious land area to minimize off-site flooding, for aquifer recharge, and providing for maintenance of some of the natural environment and habitat. These private open space areas may be designated as buffer areas, drainage retention areas, or other pervious and landscaped surfaces.

Analysis of Existing Recreation Parks and Facilities

The Plan includes adopted levels of service (LOS) for several types of recreational facilities, parks, and open space. The table, **Existing Recreation and Open Space Levels of Service**, is a listing of the standards adopted in the Goals, Objectives, and Policies and provides a comparison between the 2020 level of service demand and existing supply for each type of park. The table, **Existing Recreation Facilities Levels of Service**, lists the facilities supply as compared to the 2020 level of service demand adopted per Recreation Objective 2.1, Policy A.

The 2020 acreage for parks is calculated based on all the parks within the City limits except for the Crystal River Preserve. The acreage of the Crystal River Preserve is counted as open space for the purpose of this element. Based on the adopted levels of service, the City has an ample supply of public parks. Adjustments may be needed for beaches. Although there is a small beach at Hunter Springs Park, the opportunities for natural beach areas are limited within the City limits. Residents have access to the beach at Fort Island Trail Beach; a County-owned park located a short distance from the City.

Existing Recreation and Open Space Levels of Service 2020

| TYPE | STANDARD | 2020 DEMAND | 2020 SUPPLY |
|---------------------|------------------------------------|--------------------|---------------------|
| Public Fishing Pier | 80 linear feet per 1,000 residents | 255.2 linear ft. | Unknown |
| Public Boat Ramp | 1 per 3,000 residents | 1.1 | 2 public boat ramps |
| Nature Trails | 1 mile total | 1 mile | 2.9 miles |

| | | | |
|------------|------------------------------|-----------|-------------|
| Parks | 1 acre per 1,000 residents | 3.2 acres | 363.5 acres |
| Open Space | 10 acres per 1,000 residents | 32 acres | 690 acres |

Source: Crystal River Comprehensive Plan, Recreation Element, March 1998. Table prepared by Nancy H. Smith, Inc., 2010. City of Crystal River, updated 2022.

Existing Recreation Facilities Levels of Service 2020

| FACILITIES | LOS STANDARD | 2020 DEMAND | 2020 SUPPLY |
|--------------------------|-------------------------|------------------|-------------|
| Baseball/Softball Fields | 1 per 6,000 pop. | 1 | 8 |
| Basketball Courts | 1 per 5,000 pop. | 1 | 4 |
| Community Center | 1 per 7,000 pop. | 1 | 2 |
| Multi-Purpose Field | 1 per 5,000 pop. | 1 | 2 |
| Swimming Pool | 1 per 8,000 pop. | 1 | 1 |
| Tennis Courts | 1 per 2,000 pop. | 2 | 8 |
| Boat Ramps | 1 per 3,000 pop. | 1 | 2 |
| Beaches | 50 linear ft. per 1,000 | 159.5 linear ft. | Unknown |
| Fishing | 80 linear ft. per 1,000 | 285.5 linear ft. | Unknown |
| Bicycle Facilities | 1 mile per 5,000 pop. | 1 mile | 1.8 |
| Hiking Trails/Walking | 1 mile per 7,000 pop. | 1 mile | 5.45 |
| Nature Trails | 1 mile per 7,000 pop. | 1 mile | 2.85 |

Source: The City of Crystal River Comprehensive Plan, Recreation Element, Table R-5, March 1998. Table prepared by Nancy H. Smith, Inc., 2010. City of Crystal River, updated 2022.

Projected Recreation Parks and Facilities Needs

Land Area

Based on the parks owned and operated by the City, there are approximately 149 acres of park lands, or 46.7 acres per 1,000 residents. Including the Bicentennial Park, Churchhouse Hammock, and the Archaeological State Park, there are 363.5 acres of recreation land, or almost 114 acres per 1,000 residents. There is a surplus of park land to meet both current and future needs of its residents. Yeoman’s Park, on the north side of Crystal River on Turkey Oak Dr., is constructed on land gifted to the City from an estate for use as a nature park. Under the terms of the gift, the City had certain obligations, such as using the land only for a park as open space and nature trails. The obligation was met, and Yeoman’s Park was permanently deeded to the City in 2012.

Boat ramps are eliminated as a standard and are not included in projected needs. Additional boat ramps are prohibited in the Manatee Protection Element as part of the effort to protect the endangered West Indian Manatee. The manatee continues to be protected by the Florida Manatee Sanctuary Act (§379.2431(2), *Florida Statutes*, and are federally protected by both the Marine Mammal Protection Act and the Endangered Species Act.¹ The Manatee Protection Element was adopted following the 1989 directive from the Governor and Cabinet for 13 counties to adopt Manatee Protection plans. This directive included Citrus County. The City of Crystal River adopted the County’s element by Ordinance 96-O-01 to include protections within the Kings Bay springs and navigable waterways.

¹ Florida Fish and Wildlife Conservation Commission. Florida Manatee Protection Program.

Facilities

The City is eliminating shuffleboard courts, boat ramps, nature trails, fishing piers, and beaches from its required levels of service. The City has a surplus of recreational facilities for both its current and projected population over a five- and ten-year planning period. No capital projects are required. There is a nature trail at the Church house Hammock Park and another trail within the Preserve State Park off of State Park Drive; the management of state lands is accomplished by the Florida Division of Parks and Recreation, Florida Department of Environmental Protection.

Projected Acreage Needs by Type of Recreation Space 2020 – 2035*

| YEAR | 2020 | 2025 | 2030 | 2035 |
|--|-------------|-------------|-------------|-------------|
| <i>Population Projected</i> | 3,190 | 3,456 | 3,536 | 3,715 |
| Park Acreage Needs | | | | |
| Total Park Acreage Available | 363.5 | 363.5 | 363.5 | 363.5 |
| Actual Park Acreage required based on LOS 1 acre per 1,000 residents | 3.2 | 3.45 | 3.54 | 3.72 |
| Acres needed to meet standard | 0 | 0 | 0 | 0 |
| Open Space Acreage Needs | | | | |
| Total Open Space Acreage Available | 690 | 690 | 690 | 690 |
| Open Space Acreage required based on LOS 10 acres per 1,000 residents | 32 | 34.56 | 35.36 | 37.15 |
| Acres needed to meet standard | 0 | 0 | 0 | 0 |

*Data represents acreage needs based on Level of Service requirements per projected population for given year.
Source: City of Crystal River Planning and Community Development Department, 2022.

Projected Recreation Facilities Needs 2020 – 2035*

| FACILITIES | LOS STANDARD | FACILITIES AVAILABLE | 2020 LOS NEED | 2025 LOS NEED | 2030 LOS NEED | 2035 LOS NEED | FACILITIES NEEDED TO MEET STANDARD |
|-----------------------------|-----------------------|-----------------------------|----------------------|----------------------|----------------------|----------------------|---|
| <i>Population Projected</i> | | | 3,190 | 3,456 | 3,536 | 3,715 | |
| Baseball/Softball Fields | 1 per 6,000 pop. | 8 | 1 | 1 | 1 | 1 | 0 |
| Basketball Courts | 1 per 5,000 pop. | 4 | 1 | 1 | 1 | 1 | 0 |
| Community Center | 1 per 7,000 pop. | 2 | 1 | 1 | 1 | 1 | 0 |
| Multi-Purpose Field | 1 per 5,000 pop. | 2 | 1 | 1 | 1 | 1 | 0 |
| Swimming Pool | 1 per 8,000 pop. | 1 | 1 | 1 | 1 | 1 | 0 |
| Tennis Courts | 1 per 2,000 pop. | 8 | 2 | 2 | 2 | 2 | 0 |
| Bicycle Facilities | 1 mile per 5,000 pop. | 1.8 | 1 mile | 1 mile | 1 mile | 1 mile | 0 |

| | | | | | | | |
|-----------------------|-----------------------|------|--------|--------|--------|--------|---|
| Hiking Trails/Walking | 1 mile per 7,000 pop. | 5.45 | 1 mile | 1 mile | 1 mile | 1 mile | 0 |
| Nature Trails | 1 mile per 7,000 pop. | 2.85 | 1 mile | 1 mile | 1 mile | 1 mile | 0 |

*Data represents the total number of facilities needed based on projected population for given year.

Source: City of Crystal River Planning and Community Development Department, 2022.

2022 Inventory of Parks and Recreation Sites

| MAP* # | RECEATION FACILITY OR OPEN SPACE | LOCATION | TYPE | SIZE (ACRES) | AMENITIES |
|--------------------------------|----------------------------------|---|------------------------|--------------|---|
| County-owned Properties | | | | | |
| 1 | Bicentennial Park | 501 N. Baseball Point, Crystal River | Activity | 148 | 4 Baseball fields; 3 Softball fields 2 Multi-purpose fields Pavilion 3 Racquet ball courts 4 tennis courts 1 Olympic size swimming pool 2 volleyball courts Playground Skate park 1 Basketball court Picnic tables Bleachers & concession area Parking lots lightning detector |
| City-owned Properties | | | | | |
| 2 | Copeland Park | 850_NE 3 rd Street | Activity | 5.0 | Pavilion 2 Basketball courts Volleyball net Playground Picnic tables Barbecue pit Park benches Parking spaces |
| 3 | Cross Town Trail (multi-purpose) | Runs north to south from NE 11 th Street to NE 2 nd Court along an abandoned S.C.L. Railroad Easement | Activity (linear park) | 7.55 | Exercise equipment Park benches Improved trail, 1.8 miles Community center (historic railroad depot) |

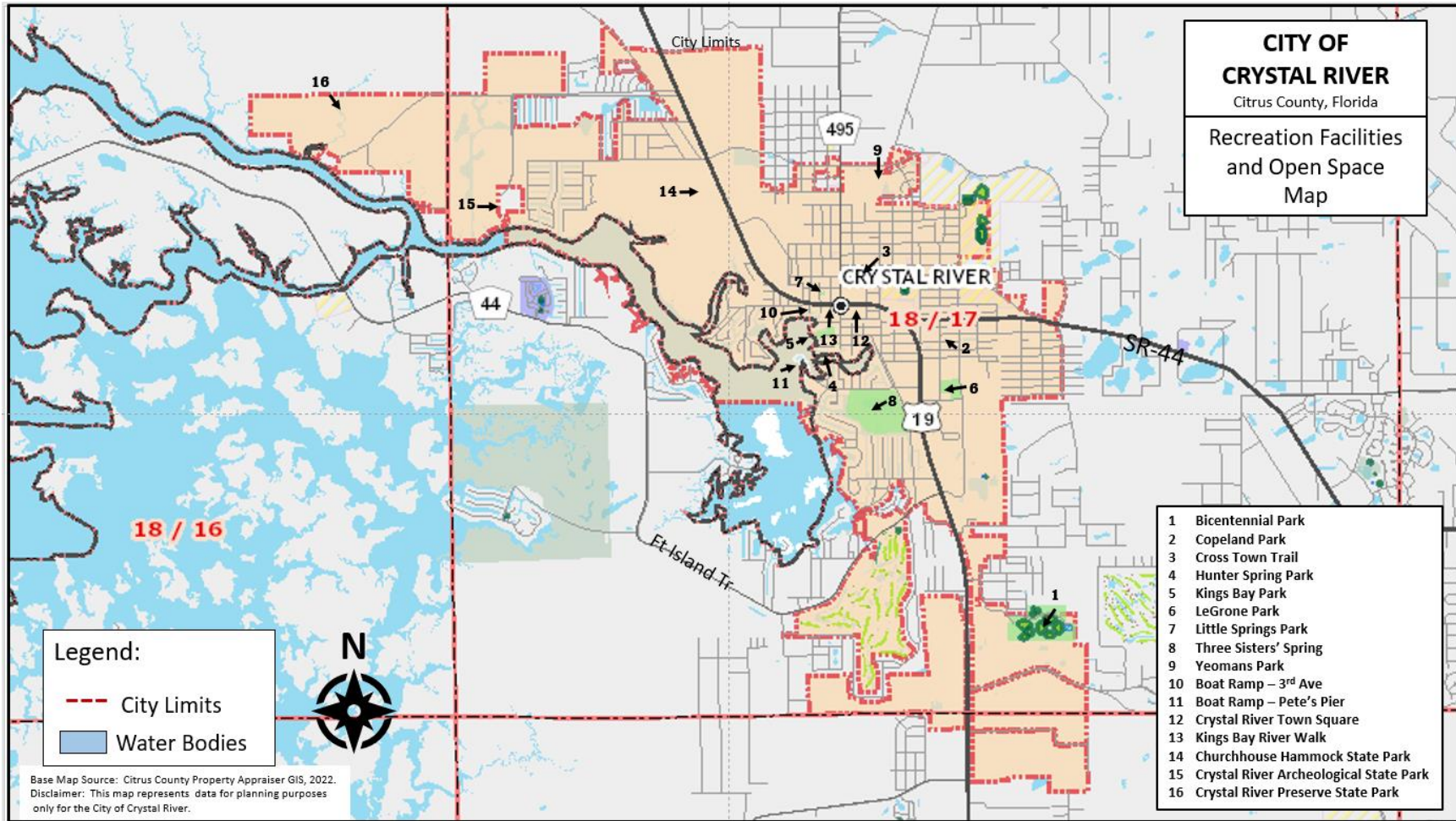
| MAP* # | RECREATION FACILITY OR OPEN SPACE | LOCATION | TYPE | SIZE (ACRES) | AMENITIES |
|--------|---|---|----------|--------------|--|
| 4 | Hunters Spring Park | 104 NE 1 st Avenue | Resource | 2.83 | Freshwater beach Pavilion Picnic tables and 4 shelters Playground Barbecue grills Park benches Kayak launch Restrooms Parking spaces |
| 5 | Kings Bay Park | NW 3 rd Street, ending at Kings' Bay | Resource | 4.36 | Canoe and kayak launch and pier Leased dive shop Pavilion Picnic shelters Picnic tables 1 playground Barbecue grills Parking |
| 6 | LeGrone Park | 425 SE 8 th Avenue, on the NW corner of SE 5 th Terrace | Activity | 24.6 | 4 Tennis Courts 2 Racquet Ball Courts 1 Basketball Court Swing set/playground Park benches YMCA Community Center 1 Ballfield Parking |
| 7 | Little Springs Park and Creative Playground | NW 2 nd Avenue, adjacent to City Hall | Activity | 2.3 | Creative Playground Gazebo Pavilion Picnic tables Park Benches Parking |
| 8 | Three Sisters' Spring (City and SWFWMD) | SW corner of Cutler Spur and Kings' Bay Drive | Resource | 57 | Nature Trail Observation Deck Benches Picnic tables Pavilion Restrooms/Parking |
| 9 | Yeomans | N. Turkey Oak Drive | Resource | 40 | Boardwalk Nature trail, 0.25 mile Pavilions Picnic tables Restrooms Parking spaces |

| MAP* # | RECREATION FACILITY OR OPEN SPACE | LOCATION | TYPE | SIZE (ACRES) | AMENITIES |
|-------------------------------|--|---|------------------------|--------------|--|
| 10 | Boat Ramp at 3 rd Avenue | 558 NW 3 rd Avenue | Resource | 0.3 | One-lane boat ramp and partial road right-of-way |
| 11 | Boat Ramp at Pete’s Pier | SW 1 st Place | Resource | | The City owns and maintains a two-lane boat ramp for public use as well as an access easement across privately-owned property. |
| 12 | Crystal River Town Square | 559 N Citrus Ave | Activity | 4.5 | Walkway, 0.25 mile Splash pad Covered picnic tables Benches Fountain Parking Restrooms |
| 13 | Kings Bay Riverwalk | NW 2 nd Ave (entry); extends along Kings Bay to Kings Bay Park | Activity (linear park) | 0.9 | Walkway, 0.75 mile Benches |
| State Owned Properties | | | | | |
| 14 | Churchhouse Hammock (State Park Service) | U.S. Highway 19, across from the Crystal River Mall | Resource | 5.5 | Boardwalk, 0.3 miles Primitive trail, 1.2 miles Rest room, picnic shelter and tables with associated parking |
| 15 | Crystal River Archaeological State Park (State Park Service) | 3400 N. Museum Point | Resource | 61.0 | Pre-Columbian, Native American site Museum Part of the Great Florida Birding Trail, 0.9 mile |

| MAP* # | RECREATION FACILITY OR OPEN SPACE | LOCATION | TYPE | SIZE (ACRES) | AMENITIES |
|-----------|--|-------------------------------|---------------------------|-----------------|--|
| 16 | Crystal River Preserve State Park (State Park Service) | 3266 N. Sailboat Avenue | Resource Open Space | 690 | <p>The State Park Service maintains an office at this location. There is fishing, hiking, biking and birding within the City limits. The developed trails are approximately 1.7 miles in length.</p> <p>The Preserve acreage within the City is an estimate based on the purchase of the Burn-up and Sims property through the CARL program.</p> |

*Reference site by number on the “Recreation Facilities and Open Space Map”.

Source: City of Crystal River, 2010. Table prepared by Nancy H. Smith, Inc., 2010. Updated by Crystal River Planning and Community Development Department, 2022.



Base Map – Citrus County Property Appraiser GIS, 2022.
 Source: Crystal River Planning and Community Development Department, 2022.

Sources

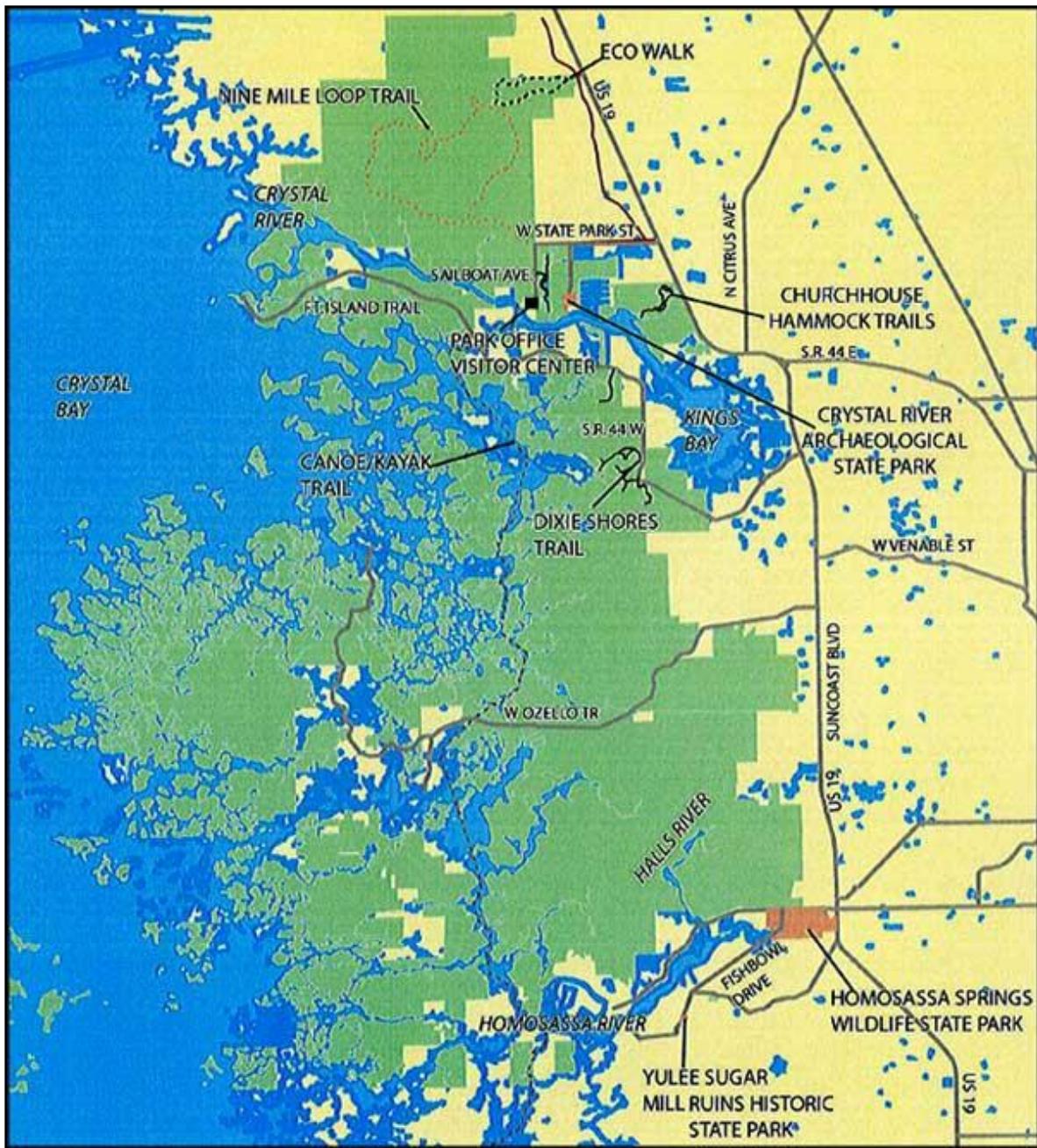
Florida Division of Recreation and Parks. Crystal River Preserve State Park Map. Retrieved from www.floridastateparks.org. on October 21, 2010.

Crystal River Archaeological State Park. Retrieved from www.floridastateparks.org. on October 21, 2010.

Florida Fish and Wildlife Conservation Commission. Florida Manatee Protection Program. Retrieved from <https://myfwc.com/wildlifehabitats/wildlife/manatee/>, 2010. Updated 2022.

Florida Geological Survey. Bulletin 66. Retrieved from <https://ufdc.ufl.edu/UF00094032/00001/images>.

Appendix Crystal River Preserve State Park



Source: Florida Division of Park and Recreation, 2010.

**Appendix
2022 Inventory of Amenities per Recreational Facilities**

| AMENITIES PARK/REC FACILITIES | Baseball/ Softball Fields | Basketball Courts | Community Center | Multi-Purpose Field | Playground | Swimming Pools | Tennis Courts | Boat Ramps | Beaches | Fishing | Bicycle Facilities (miles) | Hiking/ Trails Walking (miles) | Nature Trails (miles) |
|---|---------------------------|-------------------|------------------|---------------------|------------|----------------|---------------|------------|----------|------------|----------------------------|--------------------------------|-----------------------|
| Bicentennial | 7 | 1 | | 2 | 1 | 1 | 4 | | | | | | |
| Copeland | | 2 | | | 1 | | | | | | | | |
| Cross Town Trail | | | 1 | | | | | | | | 1.8 | 1.8 | |
| Hunters Spring | | | | | 1 | | | | 1 | | | | |
| Kings Bay | | | | | 1 | | | | | Unk | | | |
| LeGrone | 1 | 1 | 1 | | | | 4 | | | | | | |
| Little Springs | | | | | 1 | | | | | | | | |
| 3 Sisters Springs | | | | | | | | | | | | | 1.4 |
| Yeomans | | | | | | | | | | | | | 0.25 |
| Boat Ramp | | | | | | | | 1 | | | | | |
| Pete's Pier | | | | | | | | 1 | | | | | |
| Town Square | | | | | | | | | | | | 0.25 | |
| River Walk | | | | | | | | | | | | 0.75 | |
| Churchhouse Hammock | | | | | | | | | | | | 0.3 | 1.2 |
| Crystal River Archaeological State Park | | | | | | | | | | | | 0.9 | |
| Crystal River Preserve State Park (w/in city) | | | | | | | | | | | | 1.7 | |
| Totals | 8 | 4 | 2 | 2 | 5 | 1 | 8 | 2 | 1 | unk | 1.8 miles | 5.7 miles | 2.85 miles |

Source: City of Crystal River, 2010. Table prepared by Nancy H. Smith, Inc., 2010. Updated by Crystal River Planning and Community Development Department, 2022.

Recreation Element
Goals, Objectives, and Policies

ORD. 11-O-06 - SEPTEMBER 12, 2011
ORD. 22-O-23 – DECEMBER 12, 2022

Recreation Element Goals, Objectives, and Policies

GOAL 1: Public access to natural resource-based parks and public water bodies will be provided to assist in meeting Crystal River's recreation demands without diminishing the overall quality of these resources.

OBJECTIVE 1.1: The City adopts level of service standards for the types of Recreation and Open Space that will provide public access to both resource-based parks and waterfront areas.

POLICIES:

A) The level of service standards for types of recreation and open space shall be the following:

| TYPE | STANDARD |
|------------|------------------------------|
| Parks | 1 acre per 1,000 residents |
| Open Space | 10 acres per 1,000 residents |

OBJECTIVE 1.2: Public access for recreational boating shall be provided and maintained.

POLICIES:

- A) The City shall maintain the public pier and park at the end of N.W. 3rd Street known as Kings Bay Park and the Boat Ramp located at N.W. 3rd Avenue.
- B) The City shall coordinate efforts with Citrus County Government to facilitate the improvement of Fort Island Trail Park boat ramp (a County park) which serves as a boating access outlet for the City's residents.
- C) Canoes, kayaks, and other non-motorized boats launch facility shall be included in the plan for Kings Bay Park.
- D) Recreational boating facilities shall be provided and maintained that are consistent with the intent of the Manatee Protection Element to minimize manatee/boat overlap.

OBJECTIVE 1.3: The City of Crystal River shall encourage the development and maintenance of a trail system for both active and passive recreation.

POLICIES:

- A) The City shall cooperate with the Florida Department of Environmental Protection and facilitate where practical the development of nature trails on lands that are part of the Crystal River Preserve State Park. Such trails shall be well marked, have adequate parking, and have access that is not through existing residential areas.
- B) The City shall continue to seek sources of funding for the continued development of the Kings Bay Riverwalk and its expansion for connection to other pedestrian and trail facilities.

- C) The City shall coordinate its pedestrian and bike trails with municipal and state parks locations, and with the public schools.
- D) The City shall include pedestrian and bike trail access to water bodies when feasible.
- E) The City shall establish and post a series of bicycle trails on local streets.
- F) The City shall identify and if feasible, acquire available lands with recreational trail potential and which provide linkages to public parks, recreation areas and historic sites, and that connects or provides access to existing recreational trails.
- G) Funding for joint trail projects in the area of Crystal River in the List of Priority Projects as identified through the Hernando-Citrus Metropolitan Planning Organization (MPO) may be funded through the MPO funding prioritization process, or such projects may be funded fully or partially through grants, public-private partnerships; recreational impact fees as appropriate; or other public private funding sources. Highest priority shall be given to projects providing connectivity to or extension of existing multi-jurisdiction trails.

GOAL 2: Activity-based recreation facilities shall be provided in sufficient quantity and distribution to meet the demand of Crystal River.

OBJECTIVE 2.1: There shall be sufficient recreation facilities to meet the City’s needs, defined as a level of service standard for providing a variety of parks and recreational facilities to residents of Crystal River.

POLICIES:

- A) The level of service standards for recreation facilities shall be established as follow:

| FACILITIES | LOS STANDARD |
|--------------------------|-----------------------------|
| Baseball/Softball Fields | 1 per 6,000 population |
| Basketball Courts | 1 per 5,000 population |
| Community Center | 1 per 7,000 population |
| Multi-Purpose Field | 1 per 5,000 population |
| Swimming Pool | 1 per 8,000 population |
| Tennis Courts | 1 per 2,000 population |
| Bicycle Facilities | 1 mile per 5,000 population |
| Hiking Trails/Walking | 1 mile per 7,000 population |

- B) The City shall coordinate with Citrus County and the Citrus County School Board to facilitate collocation of recreational facilities and to avoid duplication of service.
- C) The City shall require, during the development planning stage, that adequate park, recreational, and open space facilities meet the needs of new residential developments based on the adopted level of service standards.

GOAL 3: Open space shall be preserved to protect environmental resources, to maintain aesthetics, to meet recreational needs, and to reduce stormwater runoff.

OBJECTIVE 3.1: Open space shall be used to meet recreational and environmental needs based on the adopted levels of service.

POLICIES:

- A) Open Space is defined as any body of water, park, or undeveloped property whether public or privately owned.
- B) The City will coordinate with the Florida Department of Environmental Protection to maintain that part of the CARL property north of Kings Bay known as Crystal River Preserve State Park and located within the City's corporate limits as conservation park lands by designating the future land use category as CON, Conservation on the Future Land Use Map.
- C) All new developments shall provide a minimum amount of open space as determined by impervious surface standards for each future land use category.
- D) Maintain existing land development regulations for use of wetlands as conservation and open space areas.
- E) Natural areas around springs and spring runs shall be reserved for open space.

GOAL 4: The City's parks and recreational sites shall be accessible to all users.

OBJECTIVE 4.1: Public access shall be provided for all residents and tourists on all City-owned parks and recreation sites.

POLICIES:

- A) The City shall maintain access to existing City parks and recreation sites.
- B) The City shall provide and maintain handicap access to all of the City's parks and recreation facilities.
- C) All new City recreation facilities shall provide complete public access, including handicap access.