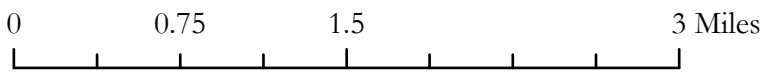
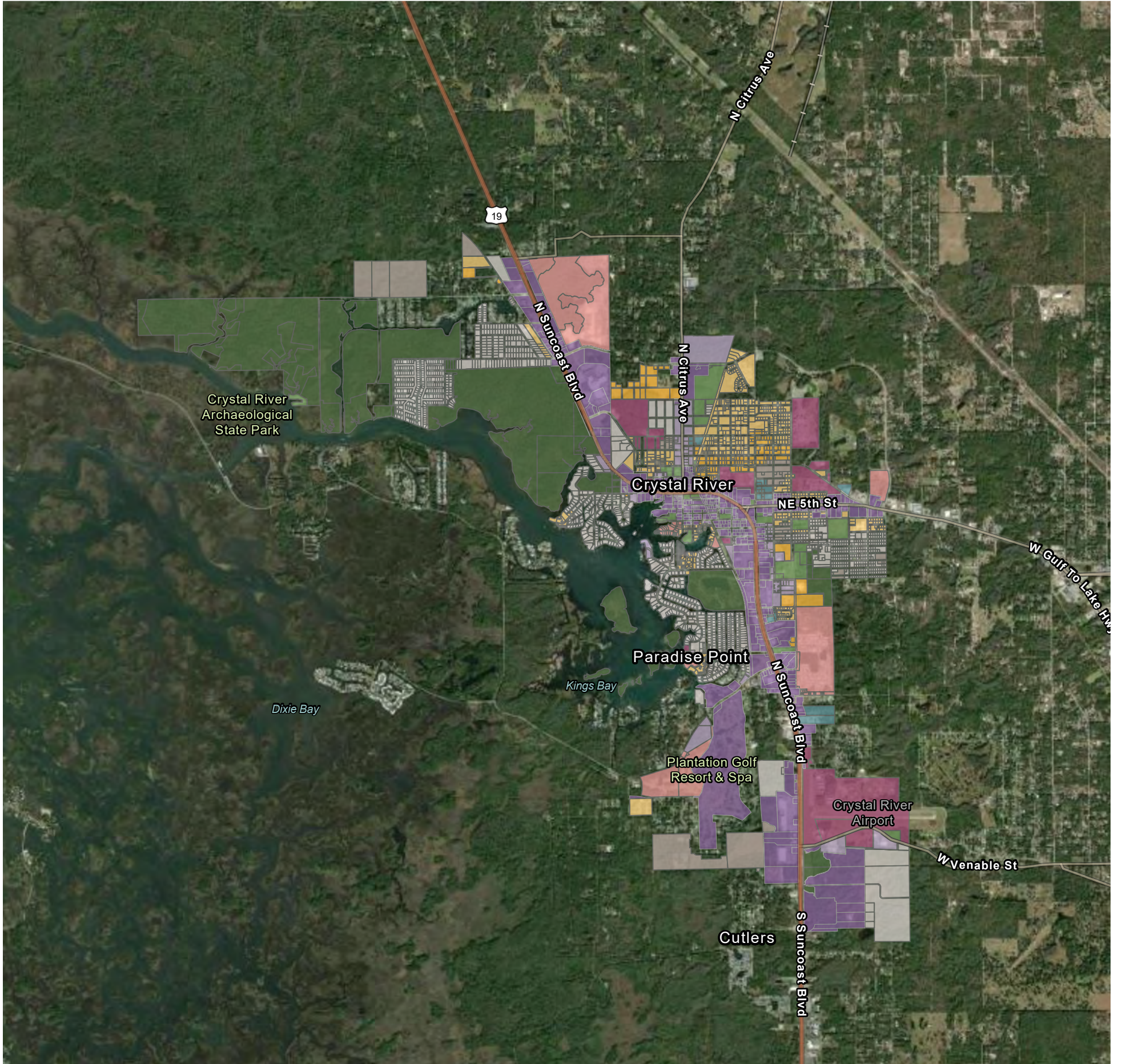


Crystal River Zoning Map

Draft 12.19.2023



- UC-1
- UC-2
- UN-1
- UN-2
- SN-1
- SN-2
- CIV
- CON
- IND
- IU
- PUD

Future Land Use	Applicable Zones	Density*	Intensity*
Urban Centers	Urban Center High (UC-1)	16 DU/AC	3.0 FAR
	Urban Center Low (UC-2)		
Urban Neighborhoods	Urban Neighborhood High (UN-1)	12 DU/AC	1.0 FAR
	Urban Neighborhood Low (UN-2)		
Suburban Neighborhoods	Suburban Neighborhood High (SN-1)	4 DU/AC	N/A
	Suburban Neighborhood Low (SN-2)		
Civic	Civic (CIV)	N/A	0.25 FAR**
Conservation	Conservation (CON)		
Special Districts	Light Industrial (IND)	N/A	1.5 FAR
	Institutional/Utility		

* Existing PUDs have a density and intensity that are defined in their approved land use plans.

** Intensity is limited to structures that are ancillary and serve a park, public amenity, open space or similar. Examples include restrooms, visitor centers or educational buildings.